



105' REAR MOUNT AERIAL
CHATTANOOGA, TN

1.517.543.6400



Chassis

- 2018 Spartan (GLAD) Sirius
- LFD Flat Roof Cab
- Lower Cab Storage
- 6 Person Seating/5 SCBA Seats Inc. w/IMMI Holders
- Spartan Advanced Protection System (APS)
- Weldon MUX Display Vista L/R Dash
- Interior Spar-Liner Black Finish
- Engine Cummins 500 HP ISX 12 1645 ft. lbs. Torque @ 1200 RPM
- Engine Compression Brake
- Transmission Allison 4000 EVS w/Retarder
- Front Fluid Fills
- 68 Gallon Fuel Cell
- Meritor 23000 Beam 48L/44R Cramp Angle
- Meritor 54000 Rear Axle
- ABS/ATC/ESC w/17" Front Disc Brakes
- Triple Frame Rail
- Severe Duty Front Bumper
- X-Duty Interior
- Delco Remy 430 AMP Alternator
- Ballistic Vests storage in Cab

Body

- Body .125" Aluminum Formed Uni-Body Construction
- Galvanized Sub-Frame Body Mounts

- Lap Type Doors
- Transverse Storage Area above Front Stabilizers
- Line - X Interior Compartment Finish
- Spare Bottle Storage in Wheel Well area - Six (6)
- Extinguisher Storage in Wheel Well area - Two (2)
- D Ring Tie-off Points at each Outrigger
- EHL Hose Bed with 1000' of 4" LDH in 100' sections
- Harrison 10KW Hydraulic Generator
- Two (2) Hannay 200' 10/3 120V Cord Reels
- Whelen Upper/Lower LED Lighting Package

Aerial

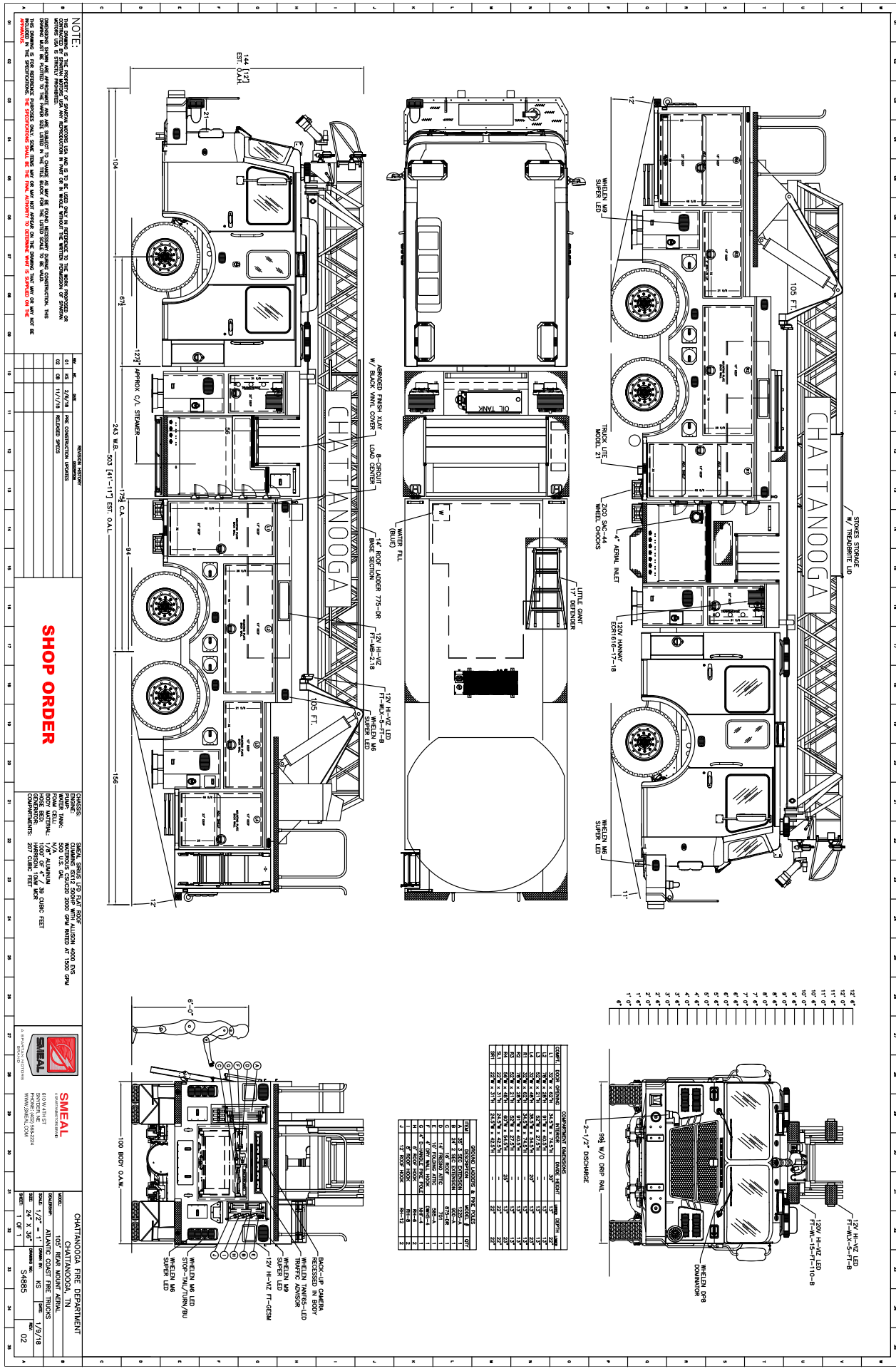
- 105' Heavy Duty 4 Section Ladder
- 750 lb. Dry/Wet Tipload Unrestricted
- Cab/Body Damage Protection Interlock System
- -6 to +72 Degrees Operation with Flows up to 1500 GPM Unrestricted
- Four (4) H style Stabilizers 16'
- Bolt-On Egress - Short
- Load lifting/Rappelling Eyes on Fly Section
- Rope Rescue Package
- Ladder Creeper Controls at Tip
- Retraction Over-ride System
- Fire Tech HiViz 12V LED Base/Tip Lighting
- Electric Positional Waterway (Patented)

- Akron StreamMaster II 3480 w/extended vertical range
- Akron SaberMaster 1578 nozzle w/1250 GPM

Pump

- Waterous CSU 2000 GPM SS Pump
- Flame Plated Impellers
- FRC Pump Boss 400 Governor
- 500 Gallon US Water Tank
- Intakes:
 - Two (2) 6"
 - One (1) 2.5" Intake L/R Side
- Discharges:
 - Two (2) 2.5" Left
 - One (1) 2.5" Right
 - One (1) 4" LDH Right
 - One (1) 2.5" Bumper
 - One (1) Aerial Waterway
- Crosslays above Pump:
 - Two (2) 1.5"
 - One (1) 2.5"
- 4" Tank to Pump
- 2.5" Tank Refill
- Deadlay Storage for 400' of 2.5"





emergencypresponse.spartanmotors.com/owntheair/

1.517.543.6400

NOTE:
 THIS CHASSIS IS THE PROPERTY OF SPARTAN MOTORS USA INC. AND IS TO BE USED ONLY IN ACCORDANCE TO THE WORK PROVIDED BY SPARTAN MOTORS USA INC. ANY MODIFICATION TO THIS CHASSIS WITHOUT THE WRITTEN PERMISSION OF SPARTAN MOTORS USA INC. IS STRICTLY PROHIBITED. THE WARRANTY PROVIDED BY SPARTAN MOTORS USA INC. IS LIMITED TO THE ORIGINAL PURCHASER AND IS VOID IF THE CHASSIS IS MODIFIED IN ANY MANNER. THE CHASSIS IS NOT TO BE USED FOR ANY OTHER PURPOSES WITHOUT THE WRITTEN PERMISSION OF SPARTAN MOTORS USA INC. ANY MODIFICATION TO THIS CHASSIS WITHOUT THE WRITTEN PERMISSION OF SPARTAN MOTORS USA INC. IS STRICTLY PROHIBITED.

CHASSIS MODEL		ENGINE MODEL	
01	347/18	01	PERFORMANCE LIMITED
02	117/18	02	PERFORMANCE LIMITED

SHOP ORDER

CHASSIS: CHATTANOOGA 105 FT. BODY
ENGINE: PERFORMANCE LIMITED
AXLES: 105 FT. BODY
WHEELS: 12V H-1/2 LED
DISCHARGE: 3'-1/2" DISCHARGE



CHATTANOOGA FIRE DEPARTMENT
 CHATTANOOGA, TN
 105 BODY MOUNT AERIAL
 105 FT. BODY
 12V H-1/2 LED
 3'-1/2" DISCHARGE
 54885

ITEM	DESCRIPTION	QTY	UNIT PRICE	TOTAL PRICE
1	105 FT. BODY	1	105000	105000
2	PERFORMANCE LIMITED	1	10000	10000
3	12V H-1/2 LED	10	1000	10000
4	3'-1/2" DISCHARGE	1	1000	1000
5	105 FT. BODY	1	105000	105000
6	PERFORMANCE LIMITED	1	10000	10000
7	12V H-1/2 LED	10	1000	10000
8	3'-1/2" DISCHARGE	1	1000	1000
9	105 FT. BODY	1	105000	105000
10	PERFORMANCE LIMITED	1	10000	10000
11	12V H-1/2 LED	10	1000	10000
12	3'-1/2" DISCHARGE	1	1000	1000